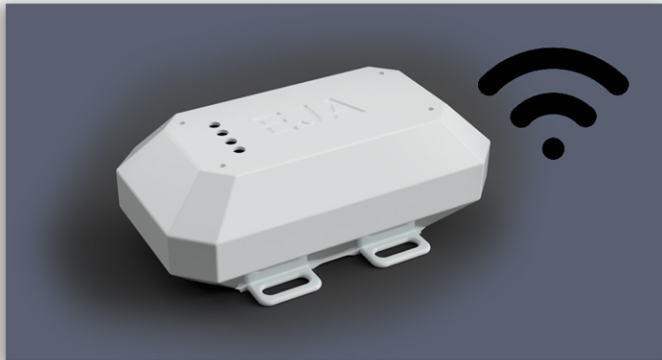




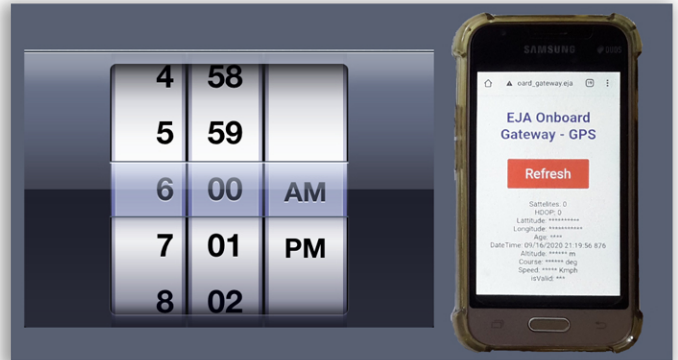
# Ropeless Gear System

Making fishing operations data-driven by tracking, scheduling, and monitoring of gear — all while reducing risk of marine entanglements.

## Get started with six easy steps:



1. Install Onboard Gateway onto vessel



2. Set release time for Buoy with App



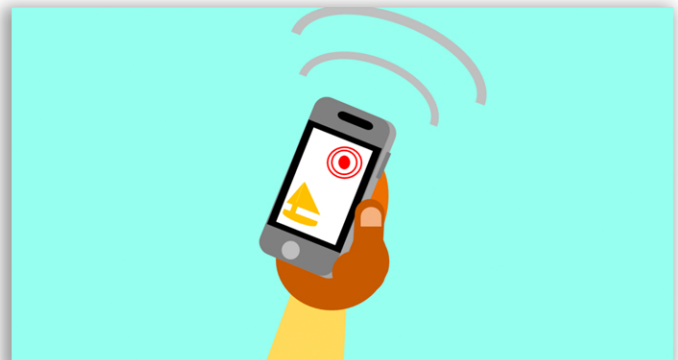
3. Install Buoy to Release Mechanism and attach to gear



4. Deploy gear and wait



5. Buoy will release at time. Location transmitting to Onboard Gateway



6. Retrieve gear, re-spool, ready to re-deploy